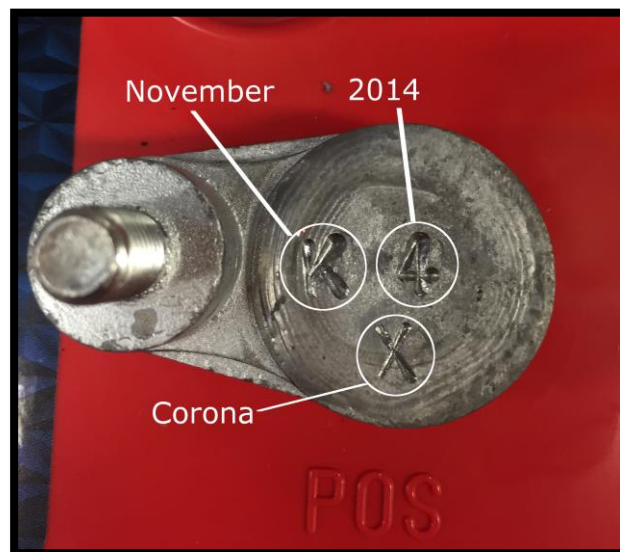




How to Read US Battery Date Codes

Flooded Lead Acid:

For flooded lead acid batteries, the date code is stamped using two letters and a number. The first letter refers to the month it was manufactured: A-L refers to January – December. The number refers to the year in which the battery was made. For example: 2 would be 2012, 3 would be 2013, 4 would be 2014, etc. The last letter refers to the plant in which the battery was made. For example: X refers to Corona, Y refers to Augusta, and Z refers to Evans. Below is an example of how to interpret a date code:



AGM:

The AGM batteries have a date that is etched into the case of the battery. The date is written in the format DDMMYY. If the date code were to be 150914, the battery would be manufactured on September 15th, 2014.